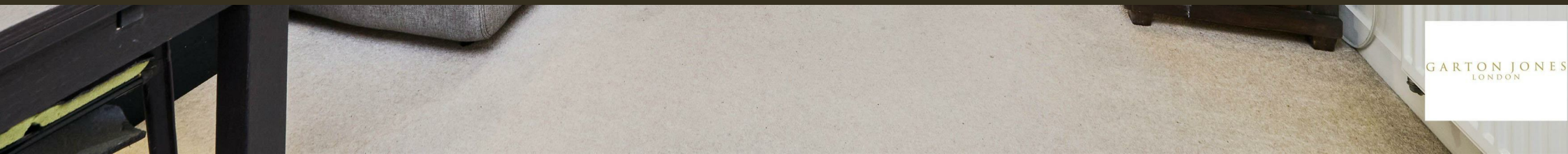




Woods House, 7 Gatliff Road  
London SW1W

GARTON JONES.COM



GARTON JONES  
LONDON

# Woods House, 7 Gatliff Road London, SW1W

## £525 Per Week

## GARTON JONES.COM

8 Gatliff Road  
Grosvenor  
Waterside  
Chelsea  
London  
SW1W 8DP

Sales +44 (0) 20 7730 5007  
gws@gartonjones.com  
www.gartonjones.com

A ONE DOUBLE BEDROOM top floor apartment to rent of approx. 481 sq.ft (44.7 sq.m) in Woods House, part of the popular Grosvenor Waterside development, on the north side of the river near Chelsea Bridge, This property is FURNISHED and benefits include an open plan reception room with a Juliette style balcony with views of the river. There is a fitted kitchen and bathroom and good storage including built in wardrobes to the bedroom. There is a 24 hour concierge, an on-site Sainsbury's Local, coffee shop, crèche and Purple Dragon private kids club. There is an On-site Residents' Gym & Spa Facilities (fee applicable). Additional amenities including shops, restaurants and the excellent transport links of both Sloane Square and Victoria Station with Gatwick express are within walking distance. Also with easy access to the open green spaces of Battersea Park and the trendy Battersea Power Station development and stylish King's Road.

Available via Garton Jones' on-site office at Grosvenor Waterside (underneath Bramah House).

Please note the furniture may differ or not be included to that shown in current photos.

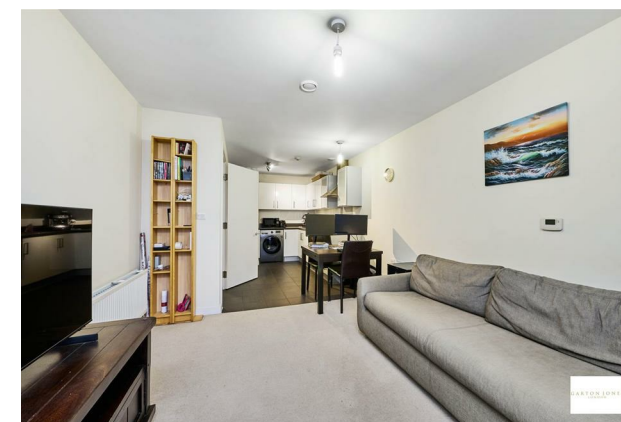
Council Tax: Westminster Council (band D)

EPC Rating: TBC

12 month minimum term. 5 week deposit required.

EPC certificate available on request.

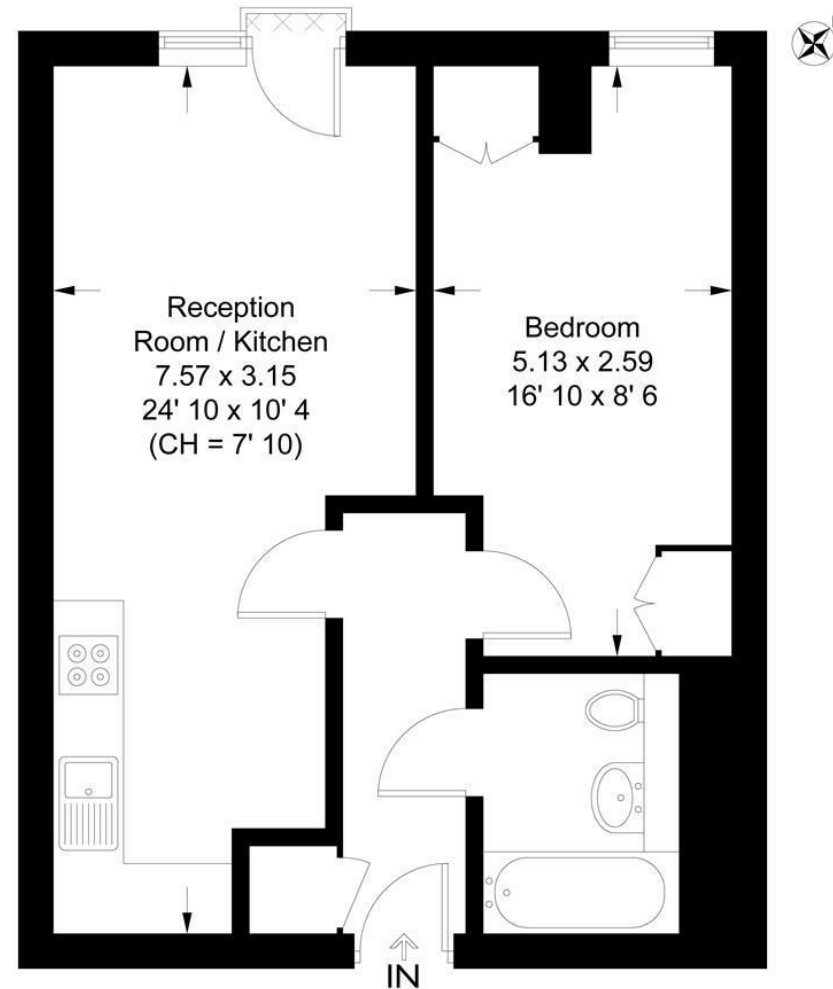
- 481 Sq.ft (44.7 Sq.m)
- 1 Bedroom Apartment
- Modern Kitchen
- On-Site Residents' Gym & Spa Facilities (Fee Applicable)
- 24 Hour Concierge
- Lift Access
- Convenient On-Site Amenities, Including A Sainsbury's Local, A Coffee Shop & A Private Kids' Club
- Prime Location Within Walking Distance Of Sloane Square, Victoria, Battersea Power Station & Gatwick Express Services
- Situated On The North Side Of The River Near Chelsea Bridge, With Easy Access To The Open Green Spaces Of Battersea Park, The Trendy Battersea Power Station Development & The Stylish King's Road.
- This Modern, Waterside Residential Development Offers A Delightful Top-Floor, 1 Bedroom Flat Featuring A Bright, Spacious Interior & Spectacular River View



## Woods House

Approximate Gross Internal Area = 481 sq ft / 44.7 sq m  
Balcony = 1 sq ft / 0.1 sq m

GARTON JONES  
LONDON



This plan is not to scale and must be used as layout guidance only. All measurements and areas are approximate and should not be relied upon to provide accurate information. This plan must not be relied upon when making property valuations, design considerations or any other such relevant decisions. We accept no responsibility or liability (whether in contract, tort or otherwise) in relation to any loss whatsoever arising from or in connection with any use of this plan or the adequacy, accuracy or completeness of it or any information within it.





